

Raut Complex

Modern residences with quality features
Best developing location



HOME LOAN APPROVED
FROM ALL BANKS.
20 : 80 SCHEME

PROJECT APPROVED FROM TOWN PLANNING RATNAGIRI AND NAGAR PANCHAYAT , DAPOLI

Site Address : Joglele, Dapoli Camp, Dapoli, Dist. Ratnagiri.

Amenities

Living & Bed Room :

- Mirror Finished 2' x 2' flooring.
- Decorative main Door with Ultra-modern fittings.
- POP finished wall with Distemper colour.
- False ceiling in Living & Moulding Patta in Bedroom.
- Two coat Acrylic Colour outside the Building.
- Mosquito net shutter in living room and bedroom.

Kitchen :

- Granite kitchen platform with kitchen Trolley.
- Stainless Steel sink with kitchen platform.
- Ceramic Tiles in kitchen upto Window height.
- Drying yard in kitchen with washing machine outlet.
- Provided Exhaust fan point in kitchen.
- RCC storage Loft in Kitchen.

Windows :

- Anodized aluminium sliding windows.
- Windows with One way glass.
- Granite window sills.

W.C. & Bathroom :

- Designer W.C. & Bathroom with full tiles.
- Hot & Cold water mixer with Gysar point in Bathroom.
- Marble frame for Bathroom & WC door.
- Provide Washbasin in Common Area.
- RCC Lofts over the Bathroom and Toilet.
- Provide sufficient sintex water tank.

Plumbing & Electric :

- Concealed Plumbing with Premium sanitary fitting.
- Concealed copper wiring with modular switches
- Sufficient electric points in all room.
- A.C. point in bed room
- Safety features like MCB / ELCB

Salient features

- Well planned flats with proper ventilation and light.
- Earthquake Resistance R.C.C. framed Structure.
- Beautiful decorative Entrance Lobby.
- Reputed Brand High-Speed Elevators.
- 24/7 power back-up for Elevators.
- CCTV Camera in mainGate and Common Area



Builder & Developer :



Architect :

PERCEPTIONS
ARCHITECT & INTERIOR DESIGNER
A/6 Gr. floor, Siddheshwar Heights, Opp. Patil Row House,
Chandanwadi, Panchpakhandi, Thane(W) Tel: 022-25360796
Email : info@perceptionarchitects.com

Legal Advisor :

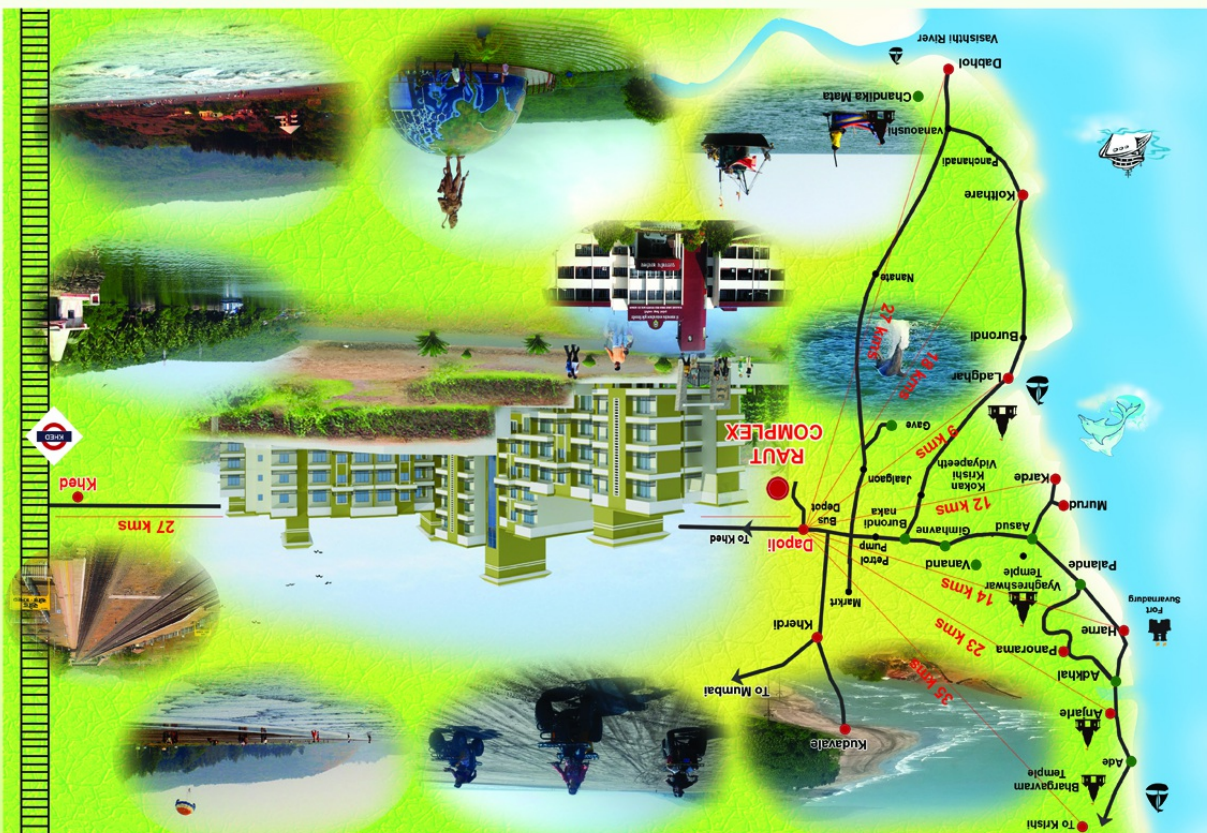
Adv. Vijaysingh C. Pawar
Dapoli, Dist. Ratnagiri.

Rcc Consultant :

CONSTRUCTIVE CONCEPT
CONSULTING ENGINEER, STRUCTURAL DESIGNER
& APPROVED VALUER
Resi.:Devrukh - 415804, Off: Ratnagiri - 415612
Tel: Off : (02352)222364, Resi. : (02354)240416
Email : deonkh@gmail.com

Office Address : Laxmi Delux Bldg., Near R.D.C. Bank, Dapoli, Dist. Ratnagiri. phone: 02358-280369, mob.: 7720873331/2, Email: aditibuildersanddevelopers@gmail.com

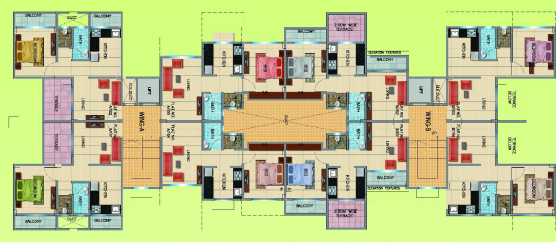
Note : The developer reserves the right to change amenities, plan, specifications and features without prior notice or obligation, at their discretion
All renderings, floor plans, pictures and maps are artist's concepts and not actual depiction of buildings, wall, road or landscaping.



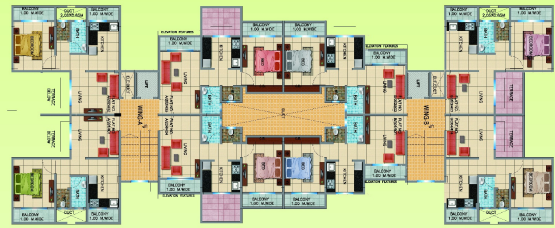
BUILDING NO-1



PARTLY STILT & PARTLY GROUND FLOOR PLAN



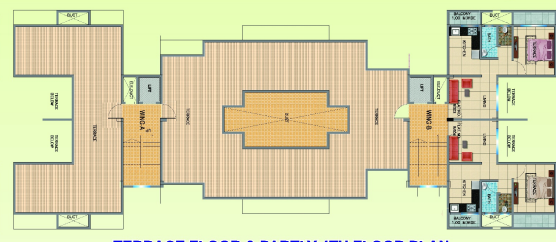
PARTLY STILT UPPER GR. & PARTLY GR.,
PARTLY 1ST & PARTLY GR. FLOOR PLAN



PARTLY STILT UPPER 1ST & PARTLY 1ST, PARTLY 2ND & PARTLY 1ST, PARTLY STILT UPPER 3RD & PARTLY 3RD, PARTLY 4TH & PARTLY 3RD



PARTLY STILT UPPER 2ND & PARTLY 2ND,
PARTLY 3RD & PARTLY 2ND FLOOR



TERRACE FLOOR & PARTLY 4TH FLOOR PLAN

BUILDING NO-2



FIRST FLOOR PLAN

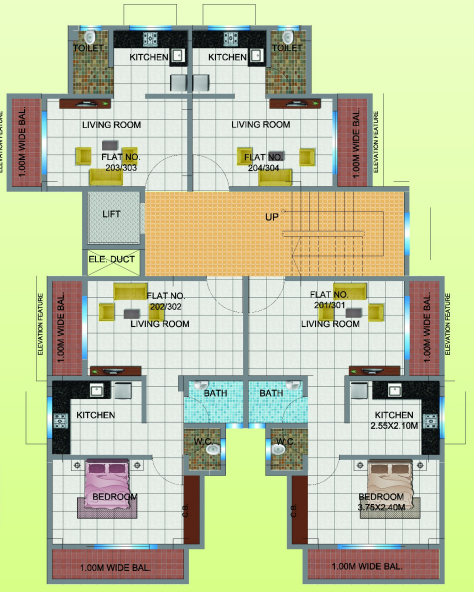


TYPICAL FLOOR PLAN (STILT UPPER GROUND & SECOND FLOOR)

BUILDING NO-3



(PARTLY GROUND & PARTLY STILT UPPER GROUND FLOOR PLAN)



TYPICAL FLOOR PLAN
(PARTLY FIRST & PARTLY STILT UPPER FIRST, PARTLY SECOND &
PARTLY STILT UPPER SECOND FLOOR PLAN)

SITE CLOSE VICINITY TO SCHOOL, COLLEGE, MARKET, VARIOUS TEMPLES & BEACHES FROM FEW KM.